

SPECIFICATIONS

MODEL NO.	EFFECTIVE FILTRATION AREA		DESIGN FLOW RATE		MAXIMUM WORKING PRESSURE		REQUIRED CLEARANCE				MEDIA REQUIRED		
	FT ²	M ²	GPM	LPM	PSI	BAR	SIDE		ABOVE		TYPE	AMOUNT	
							INCH	MM	INCH	MM	FILTER SAND**	LBS	KG
SM1700T	1.5	0.14	38	144	50	3.45	18	460	18	460	0.45-0.55 mm	100	45
SM1900T	1.8	0.17	45	170	50	3.45	18	460	18	460	0.45-0.55 mm	175	80

TABLE 1

**Also known as No. 20 Silica Sand.

Parts Diagram

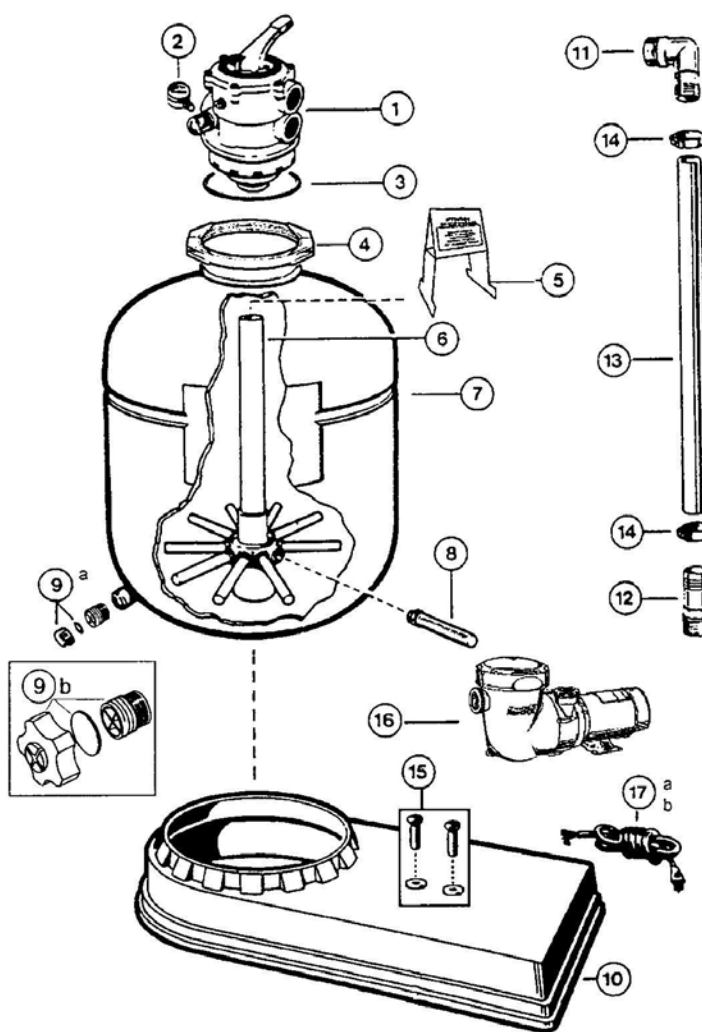
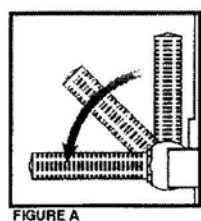


FIGURE B

Ref No	Part No	Description	NO. REQ'D
1	SP0714T	Multiport Valve	1
2	ECX27081	Pressure Gauge	1
3	GMX600F	Valve/Tank O-Ring	1
4	GMX600N	Flange Clamp (Valve-Tank)	1
5	SX202S	Sand Shield	1
6	SX164DA	Lateral Assembly W/Pipe (SM1700T)	1
	SX180DA2	Lateral Assembly W/Pipe (SM1900T)	1
7	DPX10298	Filter Tank (SM1700T)	1
	S180AAB	Filter Tank (SM1900T)	1
8	SX2000N	Lateral-One Piece	10
	SX200Q	Lateral Screw on (Prior 2005)	
9a	SX180HG	Drain Cap Assy (1 5/16" Dia)	
9b	SX180LA	Drain Cap Assy (1 3/4" Dia)	1
10	SX180K	System Mounting Base	1
11	SPX11050Z4	1 1/2" Elbow Adapter	1
12	SPX1091Z2	1 1/2" Straight Hose Adapter	1
13	SX160Z3	Hose	1
14	ECX18028	Hose Clamp	2
15	ECX1108A	5/16" X 3/4" Mounting Screw Kit	2
16		Pump	1
17a	SPX1500WA	6' Cord Set	1
17b	SPX1500WA1	3' Cord Set	

NOTE: The system Base has provisions for mounting optional timer and optional Hayward chlorine feeder