

FreshWater®
Salt System Ready



100% Filtration
SilentFlo Circulation



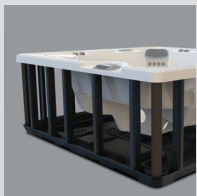
Moto-Massage® DX



Super Energy
Efficient



Wireless Remote



Polymer Substructure
& Base Pan

HIGHLIFE® COLLECTION

VANGUARD®



*Shown with Alpine White Shell
and Blackwood Cabinet*

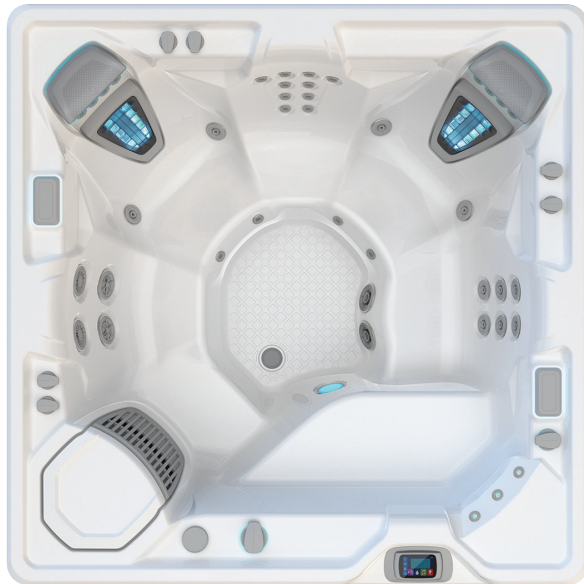
| | | | |
|---------------|----------------|-------------|----------------|
| People | Seating | Jets | Voltage |
| 6 Seats | Open | 42 Jets | 230 V |

Size
7'3" x 7'3" x 36" | 221 cm x 221 cm x 91 cm

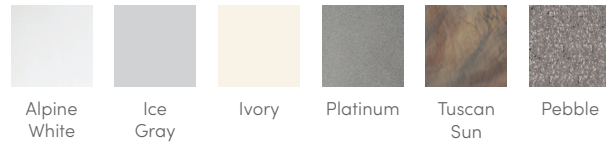
Water Care
FreshWater® Salt System Ready

HIGHLIFE® COLLECTION

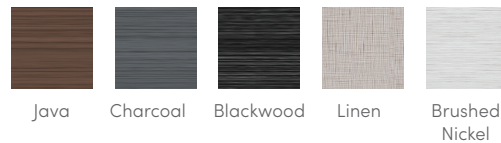
VANGUARD®



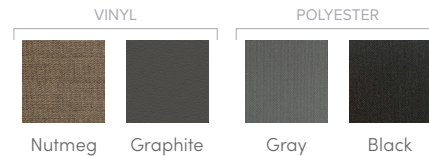
SHELL COLORS



CABINET COLORS



COVER COLORS



CABINET AND SHELL COLOR OPTIONS*

| Cabinet Colors | Java | Charcoal | Blackwood | Linen | Brushed Nickel |
|---------------------|---|--|--------------------------------------|---|--------------------------------------|
| Shell Colors | Alpine White Ice Gray Ivory Tuscan Sun Pebble | Alpine White Ice Gray Platinum Tuscan Sun Pebble | Alpine White Ice Gray Platinum | Alpine White Ivory Tuscan Sun Pebble | Alpine White Ice Gray Platinum |

LEGENDARY MESSAGE

42 Personalized-Control Jets

- 2 Moto-Massage® Seats
- Soothing Stream® Seat
- Precision® Jet Seat
- HydroStream® Seat

EASY WATER CARE

| | |
|--------------------------|---|
| Water Care System | FreshWater® Salt System Ready |
| Filtration System | 100% No-bypass Filtration Exclusive, High-flow Tri-X® Filters 325 sq. ft. Filtration Area |

LEADING ENERGY EFFICIENCY

| | |
|-------------------------|---|
| Jet Pump 1 | Wavemaster® 9000; One-speed, 2.5 HP Continuous Duty, 5.2 HP Breakdown Torque |
| Jet Pump 2 | Wavemaster® 9200; Two-speed, 2.5 HP Continuous Duty, 5.2 HP Breakdown Torque |
| Circulation Pump | SilentFlo 5000® for quiet, continuous filtration |
| Heater | Titanium No-Fault® 4,000 W / 230 V |
| Insulation | Multiple Layers of Foam Insulation; Certified to California Energy Commission (CEC) and APSP 14 energy efficiency standards for portable spas |
| Cover | 3.5" to 2.5" tapered, 2 lb. density foam core, with hinge seal |

SIZE

| | |
|-------------------|---|
| Dimensions | 7'3" x 7'3" x 36" / 221 cm x 221 cm x 91 cm |
|-------------------|---|

CAPACITY

| | |
|-------------------------|---|
| Seating Capacity | 6 seats |
| Water Capacity | 375 gallons / 1,425 liters |
| Weight | 710 lbs. / 320 kg dry; 4,890 lbs. / 2,225 kg filled** |

ADDITIONAL FEATURES

| | |
|------------------------|---|
| Water Feature | BellaFontana® with 3 illuminated arcs of water |
| Cover Lifters | CoverCradle®, CoverCradle II, Lift 'n Glide®, or UpRite® |
| Steps | Steps are available to match cabinet colors |
| Entertainment | Bluetooth® Wireless Sound System (Optional) |
| Control System | IQ 2020® with wireless remote control 230 V / 50 amp, 60 Hz (Includes G.F.C.I. protected sub-panel) |
| Lighting System | Luminescence® multi-color four-zone |
| Cooling System | CoolZone™ (Optional) |

*No special orders or shell substitutions available. Actual colors and products may vary from print representation. See dealer to verify.
**Includes water and 6 adults weighing 175 lbs. each.