

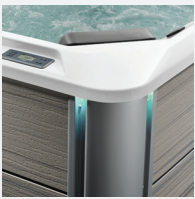
## HOT SPOT® COLLECTION



Frog® @ease® In-Line  
Cartridge Ready



FiberCor®  
High-Density Insulation



Exterior Lighting

# RHYTHM®



*Shown with Alpine White Shell  
and Almond Cabinet.*

<b>People</b>	<b>Seating</b>	<b>Jets</b>	<b>Voltage</b>
7 Seats	Open	40 Jets	230 V

**Size**  
7' x 7' x 36" | 213 cm x 213 cm x 92 cm

**Water Care**  
FROG® In-Line Cartridge Ready

# HOT SPOT® COLLECTION

# RHYTHM®



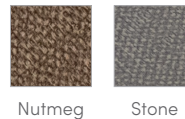
## SHELL COLORS\*



## CABINET COLORS\*



## COVER COLORS



## LEGENDARY MASSAGE

### 40 Personalized-Control Jets

- 3 XL Directional Hydromassage jets
- 2 XL Rotary Hydromassage jets
- 3 Directional Hydromassage jets
- 2 Rotary Hydromassage jets
- 30 Directional Precision® jets

## EASY WATER CARE

**Water Care System** FROG® In-Line Cartridge Ready

**Filtration System** 65 sq. ft., top loading

## LEADING ENERGY EFFICIENCY

**Jet Pump 1** Wavemaster® 6200; Two-speed, 1.5 HP Continuous Duty, 3.2 HP Breakdown Torque

**Jet Pump 2** Wavemaster® 6000; One-speed, 1.5 HP Continuous Duty, 3.2 HP Breakdown Torque

**Heater** No-Fault® 4,000 W / 230 V

**Insulation** FiberCor® Insulation; Certified to California Energy Commission (CEC) and APSP 14 energy efficiency standards for portable spas

**Cover** 3.5" to 2.5" tapered, 2 lb. density foam core

## SIZE

**Dimensions** 7' x 7' x 36" / 213 cm x 213 cm x 92 cm

## CAPACITY

**Seating Capacity** 7 seats

**Water Capacity** 330 gallons / 1,250 liters

**Weight** 845 lbs. / 383 kg dry; 4,820 lbs. / 2,185 kg filled\*\*

## ADDITIONAL FEATURES

**Smart Spa Technology** Hot Spring Spas App, Powered by the Connected Spa Kit

**Water Feature** Included

**Cover Lifters** CoverCradle®, CoverCradle II, Lift 'n Glide®, or UpRite®

**Steps** Hot Spot Collection Step (Almond, Havana, and Storm), Polymer Step (Ash)

**Entertainment** Wireless Sound System

**Control System** IQ 2020® with LCD control panel  
230 V / 50 amp, 60 Hz  
(Includes G.F.C.I. protected sub-panel)

**Lighting System** Interior: 10 multi-color LED points of light  
Exterior: 4 multi-color LED points of light

\*Actual colors and products may vary from print representation. See dealer to verify.

\*\*Includes water and 7 adults weighing 175 lbs. each. Export models available in 240 V, 50 Hz, 2,000 W heater.